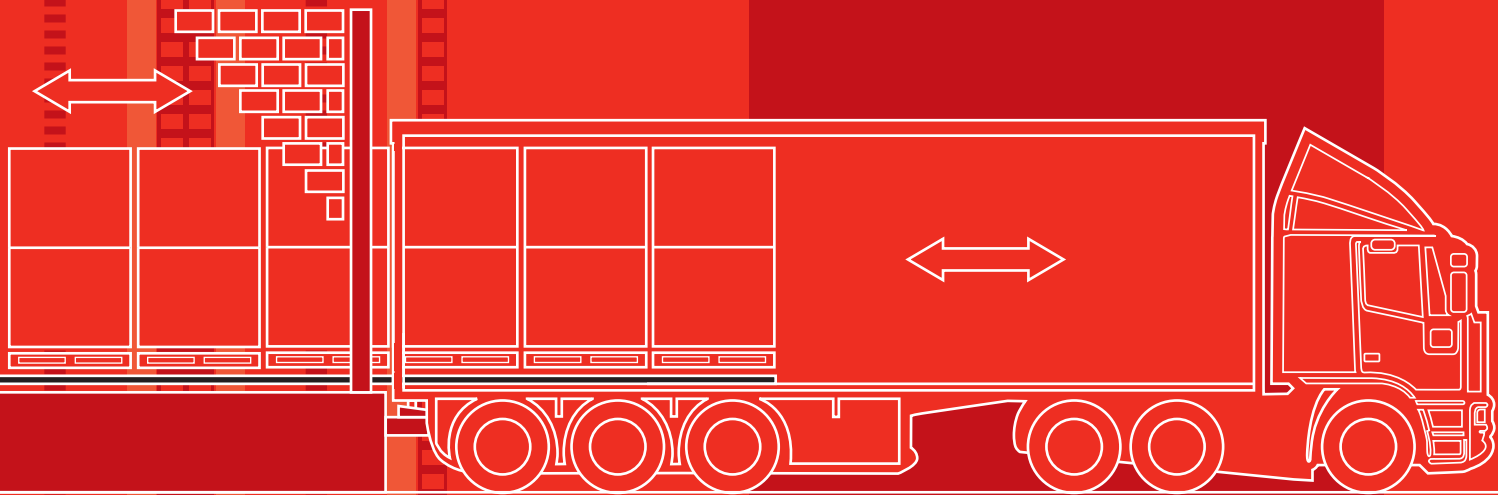
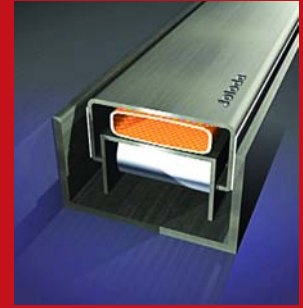
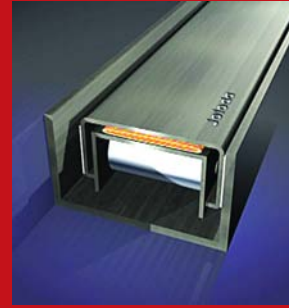




Joloda



MAKING LIGHT WORK OF HEAVY LOADS



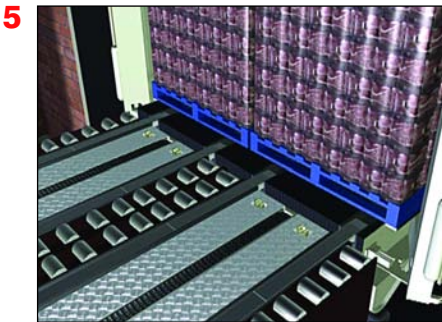
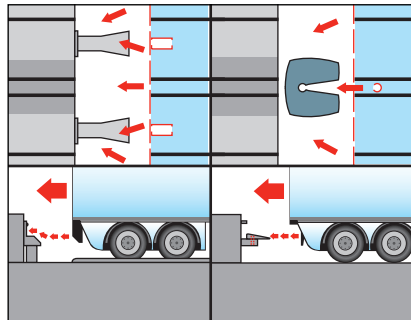
**TRAILER SKATE
SHUTTLE TRAILER
AUTOMATIC FACTORY TO
WAREHOUSE TRANSFER**

**LONG
SHUTTLE**

TRAILER SKATE SHUTTLE TRAILER

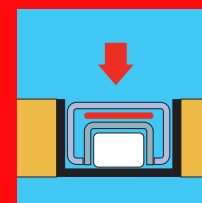
AUTOMATIC FACTORY TO WAREHOUSE TRANSFER

Making light work of heavy loads

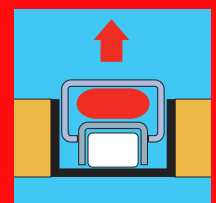


- Pre-assembles loads up to 30 tons, transfers from dock to trailer the full load in 90 seconds
- Consists of 4 x 13.6 mtr long skates which are dock mounted and run in sunken tracks and are elevated pneumatically
- Minimal cost trailer installation, no moving parts
- System controls are standard plc, with ramp up, ramp down and speed control from 3m to 30m per minute
- Fail-safe manual skate back up system
- Accumulation of pallet loads on warehouse dock by moving floor or slipchain system with or without trailer present
- Speeds shuttle operations to reduce number of trucks required
- Suits all palletised loads, paper reels and drums
- Removes fork truck from loading dock areas
- De-mans operation at factory and distribution centre
- Fail-safe dock lock and levelling devices to suit client and loading bay operation – see fig 2
- No movement of loads during transit
- Used by all major blue chip companies in Europe

Skate lowered



Skate raised



Patents applied for (UK & Worldwide)

Joloda International Limited

51 Speke Road, Garston, Liverpool, England L19 2NY
Tel: +44 (0) 151 427 8954 Fax: +44 (0) 151 427 1393
Email: info@joloda.com Website: www.joloda.com

Joloda™